

QuickSpecs v5

NiSCA PR5350 High-Speed ID Card Printer

The NEW PR5350 offers a small foot-print, 24-bit color, 256-Grayscale, security lamination, encoding options and prints at the astounding speed of over 164 cards / hour.

The PR5350 joins the PR5300 series of printers and has the same NiSCA quality, manufactured in their ISO certified production facility. The new printer offers brilliant 24-bit images printed on CR80 and CR79 cards with thicknesses ranging from 20 to 50 mils (10mil available as speical order).

The PR5350 is available with options for MagStripe, IC Contact Chip, IC Contact-less reading and encoding; and also security lamination with the addition of the PR5302 laminator. Variable UV printing is also available for an additional security layer.

Summary of printer features:

- High-speed printing:
 - 164 cards per hour - YMCO
 - 133 cards per hour - YMCKO
 - 124 cards per hour - YMCKO/K (dual sided print)
 - 132 cards per hour - YMC / K / Laminate (dual sided print / single side lamination)
 - 112 cards per hour - YMC / K / Laminate / Laminate (dual sided printing & lamination)***
 - 600 cards per hour - K Resin
 - 400 cards per hour - K Resin and 3-Track Magnetic Encoding
- Full color edge to edge printing
- 300dpi dye-sublimation printing technology
- Industry leading 24-bit continuous tone printing
- 256-Grayscale
- Dual sided printing
- Dual sided lamination with alternating patch options
- USB 2.0 and Micro SCSI II output
- Full Windows compatibility
- IP Networking addressing via JetDirect device fully supported by Nisca drivers
- Automated cleaning mechanism
- MTBF 100,000 cards
- ISO9001 & ISO14001 Certifications

Summary of optional accessories:

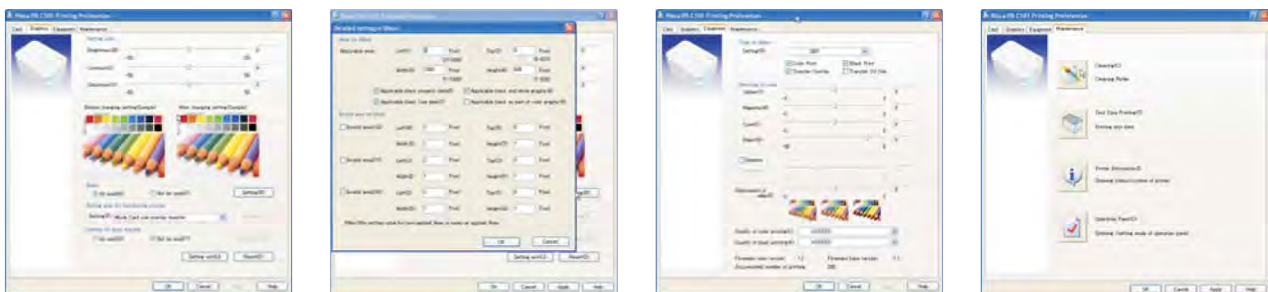
- Security Overlamination w/ PR5302
 - 1mil Patch style
 - Thinfilm / foil
- Encoding
 - MagStripe
 - IC Contact
 - IC Contact-less
- Cleaning
 - Fully accessorized 10,000 print kit



PR-C101 Plastic Card Printer Specifications:

Specifications:

Printing system	300dpi, 24-bit continuous tone printing, 16.7million colors
Printing method	Thermal transfer dye-sublimation
Print media	PVC or polyester cards with polished PVC finish
Media size	CR-80: 3.375" x 2.125 / 85.6 x 54mm
Media thickness	.030" (30mil) / .76mm
Print area	Edge to edge
Input hopper	100 cards
Output hoppers	30 cards each hopper
Image memory	16MB with parallel processing
Display	Rotating LCD 16 character display shows printer status and diagnostic prompts
Print ribbons options:	- 5 Panel YMCKO Color Ribbon Cartridge, 250 cards per roll - Black Resin, 1000 cards per roll (minimum)
Print speeds*	
YMCKO Single side:	25 Seconds per card (150/hr)
Black Resin:	5.6 Seconds per card (643/hr)
Encoding options	Offering integrated driver control for all encoding that includes: - IC Contact-less MIFARE [®] DESFire [®]
Interface	USB 2.0
MTBF	50,000 cards
Dimensions	7.2" (H) x 13.16" (W) x 8.88" (D) / 180 mm x 329 mm x 222 mm
Weight	14.3lbs. / 5.6kg
Operating temperature	65 to 80 F / 18 to 27 C
Power source	AC Power source AC100/240v 50/60Hz auto-switching
Agency listing	UL/CE/FCC
Warranty	2-year printer warranty
Drivers	Windows [®] and MAC OS compatible



Print speed indicates approximate batch print speed and is measured from the time a card feeds into the printer to the time it ejects from the printer. Print speeds do not include encoding time or the time needed for the PC to process the image. Process time is depend on the size of the file, the CPU, the amount of PC memory, the interface (SCSI, USB, Parallel), and the amount of resources at the time of the print job.

Specifications may change without notice.

* Please contact us for more details